



Leaders in Safety



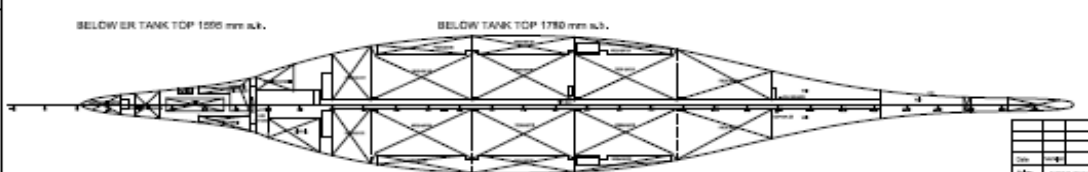
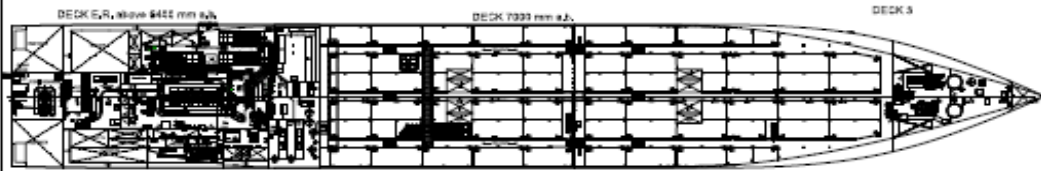
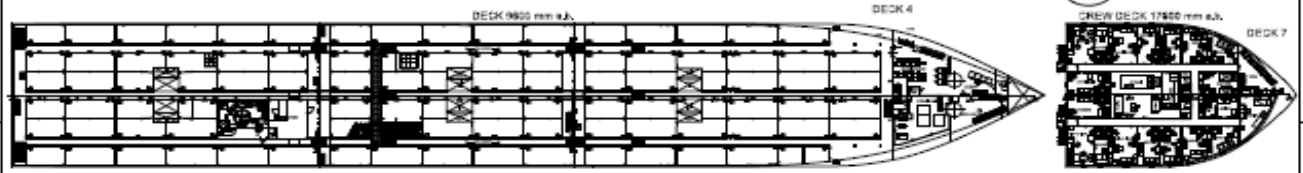
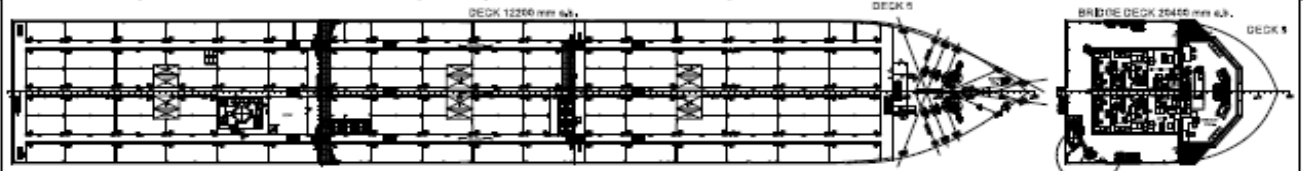
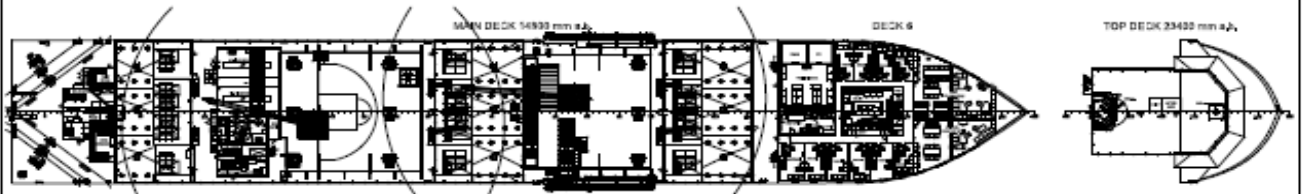
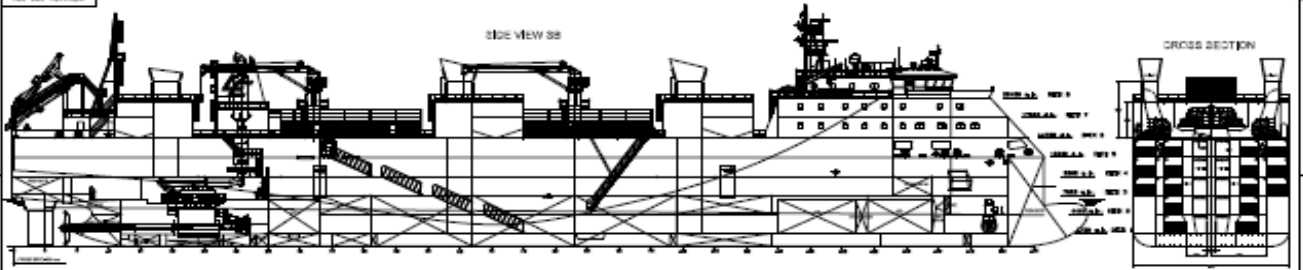
Livestock Express * E chartering@livestock-express.com * W www.livestock-express.com

Livestock Vessel Greyman Express

Flag : Singapore Port of Registry : Singapore Built : 2016 IMO N° : 9733777 Class : BV Builder : China Cosco, Guangdong Class notation : I Ⓜ Hull Ⓜ Mach, Livestock Carrier, Unrestricted Navigation, Ⓜ Aut-UMS, InWaterSurvey, Cleanship, MON-Shaft, COMF-NOISE 2, COMF-VIB 2, green passport	Dimensions LOA : 134.80 m Length between pp : 125.25 m Beam moulded : 19.60 m Depth : 14.80 m Summer draft : 6.80 m
Machinery	Tonnages
Main Engine : 6,090 kW Wartsila W7X35 Shaft generator : 1,050 kW Aux Engines : 3 x 1,100 kW 2nd source of power : 465 kW Bow Thruster : 750 kW	DWT : 5,225 T Scantling draft : 6.80 m Design draft : 5.80 m Gross Tonnage : 10,421 Net Tonnage : 3,126
Remarks	Speed / Consumption
Gear : 2 x 3 T deck cranes @ 24 m Air circulation: 90 air changes per hour (200 PAT)	Max sea speed: 18 knots Service speed: abt 16.75 knots (shaft generator engaged)
Capacities	
Total Gross Pen area: 4,622 m ² Number of decks: 5 Deck space fodder: 495 m ² Fodder (silo): 1,200 m ³ Fresh water: 2,694 m ³ Fresh water production: 2 x 100 m ³ per day	HFO 1,125 m ³ MGO 102 m ³ MDO 90 m ³

Livestock Express * E chartering@livestock-express.com * W www.livestock-express.com

18787-ARR-10



Main Particulars:

Length o.s.l.	228,350 m
Length p.p.l.	220,000 m
Breadth p.p.l.	32,000 m
Depth p.p.l.	12,000 m
Depth to upper deck	12,000 m
Depth to lower deck	12,000 m
Depth to keel	12,000 m
Max. hold capacity	2000 m ³
Ballast capacity 200	1200 m ³
Ballast capacity 300	800 m ³
Ballast capacity 400	400 m ³
Ballast capacity 500	200 m ³
Ballast capacity 600	100 m ³
Ballast capacity 700	50 m ³
Ballast capacity 800	25 m ³
Ballast capacity 900	12.5 m ³
Ballast capacity 1000	6.25 m ³
Ballast capacity 1100	3.125 m ³
Ballast capacity 1200	1.5625 m ³
Ballast capacity 1300	0.78125 m ³
Ballast capacity 1400	0.390625 m ³
Ballast capacity 1500	0.1953125 m ³
Ballast capacity 1600	0.09765625 m ³
Ballast capacity 1700	0.048828125 m ³
Ballast capacity 1800	0.0244140625 m ³
Ballast capacity 1900	0.01220703125 m ³
Ballast capacity 2000	0.006103515625 m ³

Code	Description	Unit	Value
01	Length o.s.l.	m	228,350
02	Length p.p.l.	m	220,000
03	Breadth p.p.l.	m	32,000
04	Depth p.p.l.	m	12,000
05	Depth to upper deck	m	12,000
06	Depth to lower deck	m	12,000
07	Depth to keel	m	12,000
08	Max. hold capacity	m ³	2000
09	Ballast capacity 200	m ³	1200
10	Ballast capacity 300	m ³	800
11	Ballast capacity 400	m ³	400
12	Ballast capacity 500	m ³	200
13	Ballast capacity 600	m ³	100
14	Ballast capacity 700	m ³	50
15	Ballast capacity 800	m ³	25
16	Ballast capacity 900	m ³	12.5
17	Ballast capacity 1000	m ³	6.25
18	Ballast capacity 1100	m ³	3.125
19	Ballast capacity 1200	m ³	1.5625
20	Ballast capacity 1300	m ³	0.78125
21	Ballast capacity 1400	m ³	0.390625
22	Ballast capacity 1500	m ³	0.1953125
23	Ballast capacity 1600	m ³	0.09765625
24	Ballast capacity 1700	m ³	0.048828125
25	Ballast capacity 1800	m ³	0.0244140625
26	Ballast capacity 1900	m ³	0.01220703125
27	Ballast capacity 2000	m ³	0.006103515625