



Brahman Express



Main Particulars

Flag:	Philippine	Built:	2002
IMO no.:	9238416	International GT/NT:	7.727 / 2.318
Port of Registry:	Manila	Panama GT / NT:	26.639 / 6.506
L.O.A.:	133,39 m	Suez GT / NT:	8.189 / 7.261
Breadth Extreme:	16,35 m	Main Engine:	5.040 kW
Draft SDWT:	6,17 m	Bowthruster:	Yes

Livestock particulars

Max. loading area

4.758 m ²	Deck 1: 727 m ²
	Deck 2: 832 m ²
	Deck 3: 1.053 m ²
	Deck 4: 1.369 m ²
	Deck 5: 775 m ²

NB: Actual available loading space might vary depending on trade and trade area!

Loading gate positions PS & SB

Above waterline	From bow	From stern	
1. 3,1 m	47,3 m	86,1 m	Deck 4
2. 3,1 m	108,0 m	25,4 m	Deck 4
3. 5,5 m	100,0 m	33,4 m	Main deck
4. 5.5 m	54,0 m	79,0 m	Main deck

Fresh water

Capacity:	1.348 m ³
Production:	150 m ³ /d (at sea)

Fodder info

Silo capacity:	1.287 m ³
Deck space:	430 m ²

Position center of silo 1 (fwd) Position center of silo 2 (mid) Position center of silo 3 (aft)

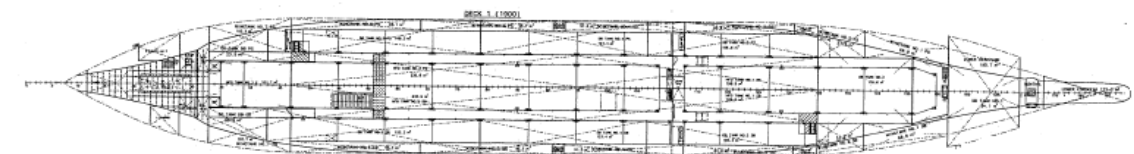
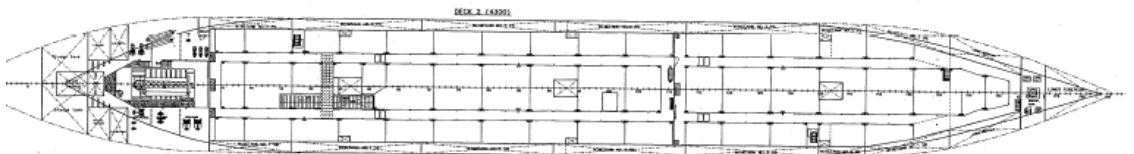
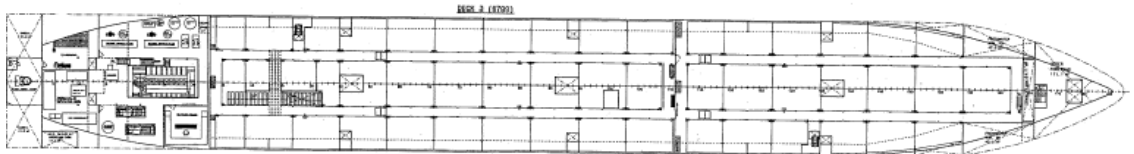
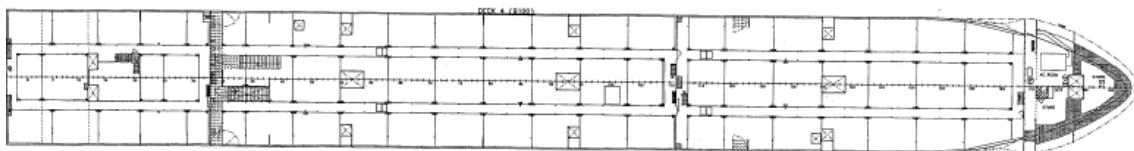
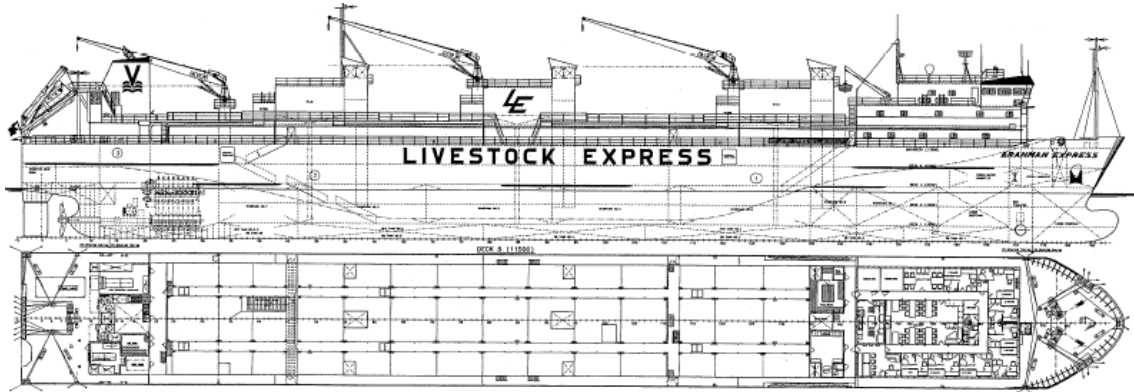
From bow:	42,0 m	From bow:	73,0 m	From bow:	98,0 m
From stern:	91,5 m	From stern:	60,0 m	From stern:	35,5 m

Height of silo filling above waterline: 14,0 m



Air circulation

45-56 Air changes / hour



Dens Ocean details

Dens Ocean Zeebrugge

Dens Ocean Transport & Shipping N.V.
Tijdokstraat 12
8380 Zeebrugge
Belgium

T: +32 50 547848
F: +32 50 547864
E: livestock@densocean.be
W: www.vroon.nl

Dens Ocean Sydney

Dens Ocean Transport & Shipping (AUS) Pty Ltd
Suite 705, 6a, Glen Street
Milsons Point NSW 2061
P.O. Box 275
Milsons Point NSW 1565
Australia

T: +61 2 9954 1488
F: +61 2 9954 1588
E: livestock@densocean.com.au