

Sahiwal Express



Main Particulars

Flag:	Philippine	Rebuilt:	1998
IMO no.:	8813037	International GT/NT:	2.709 / 813
Port of Registry:	Manila	Panama GT / NT:	2.886
L.O.A.:	91,50 m	Suez GT / NT:	2.743
Breadth Extreme:	16,80 m	Main Engine:	998 kW
Draft SDWT:	4,26 m	Bowthrustrer:	Yes

Livestock particulars

Max. loading area

Cattle: 3.498 m ²	Deck 1: 494 m ²
Sheep: 2.061 m ²	Deck 2: 419 m ²
Sheep: deck 4,5,6 only	Deck 3: 523 m ²
	Deck 4: 579 m ² (exposed deck)
	Deck 5: 710 m ² (exposed deck)
	Deck 6: 773 m ² (exposed deck)

NB: Actual available loading space might vary depending on trade and trade area!

Loading gate positions SB only

Above waterline	From bow	From stern	
1. 5,0 m	32,5 m	59,0 m	Deck 4
2. 7,4 m	38,5 m	53,0 m	Deck 5
3. 9,6 m	46,0 m	45,5 m	Deck 6

Fresh water

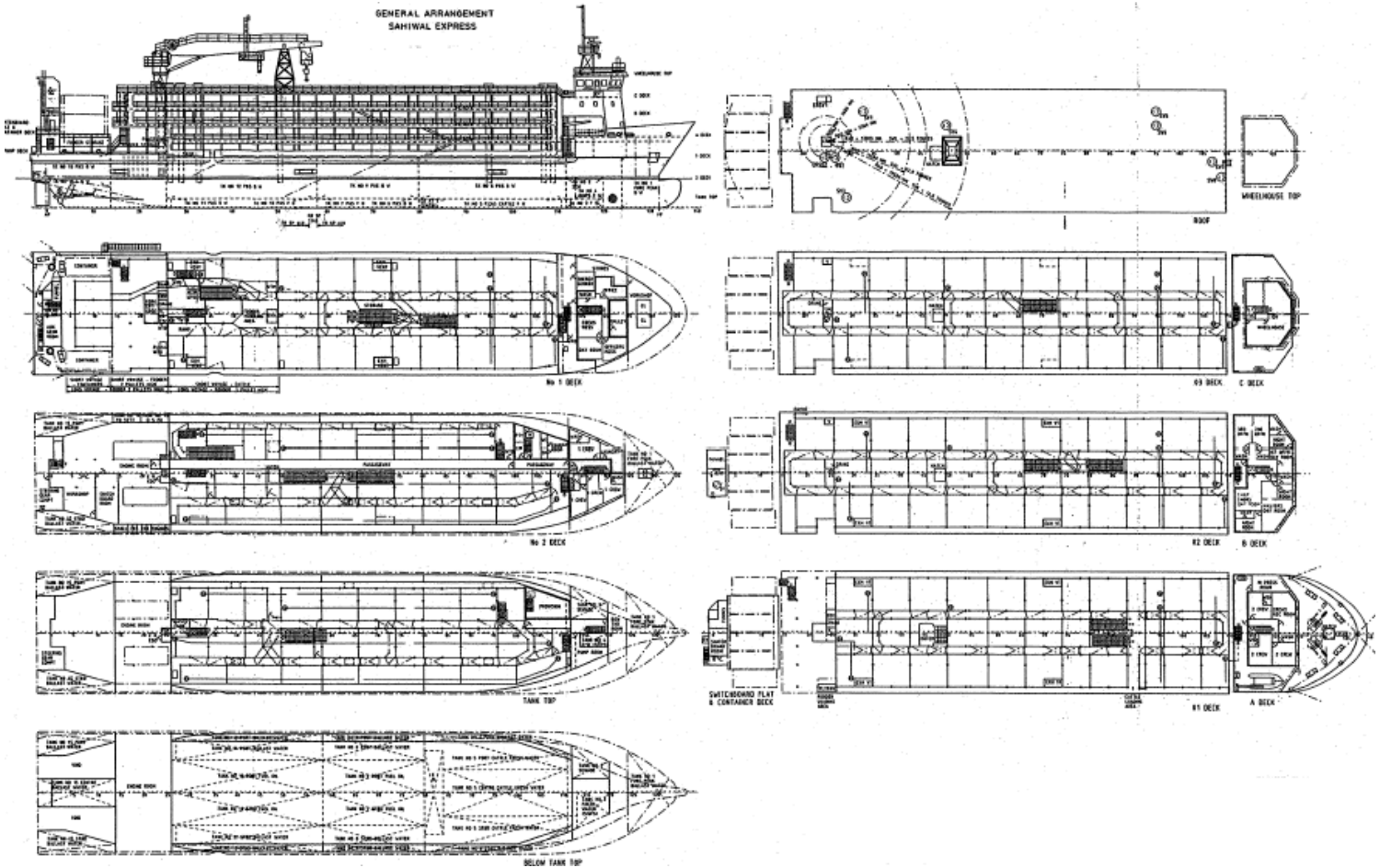
Capacity:	746 m ³
Production:	105 m ³ /d (at sea)

Fodder info

Silo capacity:	N.A.
Deck space:	149 m ²

Air circulation

60 Air changes / hour



Dens Ocean details

Dens Ocean Zeebrugge

Dens Ocean Transport & Shipping N.V.
Ltd
Tijdokstraat 12
8380 Zeebrugge
Belgium

T: +32 50 547848
F: +32 50 547864
E: livestock@densocean.be
W: www.vroon.nl

Dens Ocean Sydney

Dens Ocean Transport & Shipping (AUS) Pty

Suite 705, 6a, Glen Street
Milsons Point NSW 2061
P.O. Box 275
Milsons Point NSW 1565
Australia

T: +61 2 9954 1488
F: +61 2 9954 1588
E: livestock@densocean.com.au