



GENERAL

Place of Build	Jaya, Singapore
Vessel Type	AHTS
Year Built	1999
Flag	Singapore
Call Sign	C6RW9
Class	ABS

COMMUNICATIONS EQUIPMENT

HF radio	Furuno DSC-6
VHF Radio	2 x Furuno FM8500
Portable VHF Radio's	3 x Motorola GP328
Satellite Communications (Voice and Fax)	Mini M
E.P.I.R.B	ACR Model RLB-31 Cat1
GMDSS Compliance	Area A3

PRINCIPLE DIMENSIONS

Length Overall	61.0 metres
Beam	13.8 metres
Maximum Draft	4.8 metres
Net Registered Tonnage	567
Gross Registered Tonnage	1402

NAVIGATION EQUIPMENT

Radar No. 1	Furuno FR 2135S
Radar No. 2	Furuno RDP-150
GPS	Furuno GP 31
Echo Sounder	Furuno FE 680
Navtex	Furuno NX-500
Auto Pilot	Comnav 2001
Gyro Compass	Gyro Sphere SN. 8462

MACHINERY & PROPULSION

Main Propulsion Number	2
Main Propulsion Type	Wartsila 6L26 Diesel
Total BHP	5300
Propellers	2 x CPP with nozzles
Bow Thruster	1 x electric motor, CP prop
Lateral Thrust	8 tons
Auxillary Generators	2 x 300 kW Caterpillar 3408
Emergency Generators	N/A - only 24V motor 3.7 kW
Rudders	Becker

DECK MACHINERY

Tugger Winch	2 x 10 tonnes
Capstan	2 x 5 tons
Deck Crane	NIL

PERFORMANCES

Fuel Consumption at Max Speed	18 m3 per day @ 14 knots
Fuel Consumption at Service Speed	10 m3 per day @ 12 knots
Towing	20 m3 per day
Standby	1 m3 per day
Fuel Type	ISO 8217: 2005 DMA or later revisions

TOWING & ANCHOR HANDLING

Bollard Pull	68 tons (cont) / 72 tons (max)
Winch	1 x hydraulic double waterfall
Line Pull	100 tons
Brake Capacity	180 tons
Anchor Handling Wire Capacity	1 x 500 m x 58mm
Tow Drum Capacity	1000 m x 52mm
Spare Tow Wire Capacity	NIL
Stern Roller	3.5 m x 1.5 m - 180 tons
Tow Pins	2 x 200 tons
Wire/Chain Stopper	Karmoy Karmfork

CARGO CAPABILITIES

Fresh Water	670 m3 @ 100m3 per hr at 75m head
Drill Water	300 m3 @ 100m3 per hr at 75m head
Fuel Capacity	402 m3 @ 100m3 per hr at 75m head
Liquid Mud	326 m3 @ 75m3 per hr
Dry Bulk	4 x 1500 cu ft each, total 6,000 cu ft
Dead Weight	1598 tons
Clear Deck Area	32m x 10m = 320 Square Metres
Deck Cargo	500 tons

LIFE SAVING APPARATUS

Liferafts	4 x 25 = 100 men
Lifeboats	NIL

ACCOMMODATION

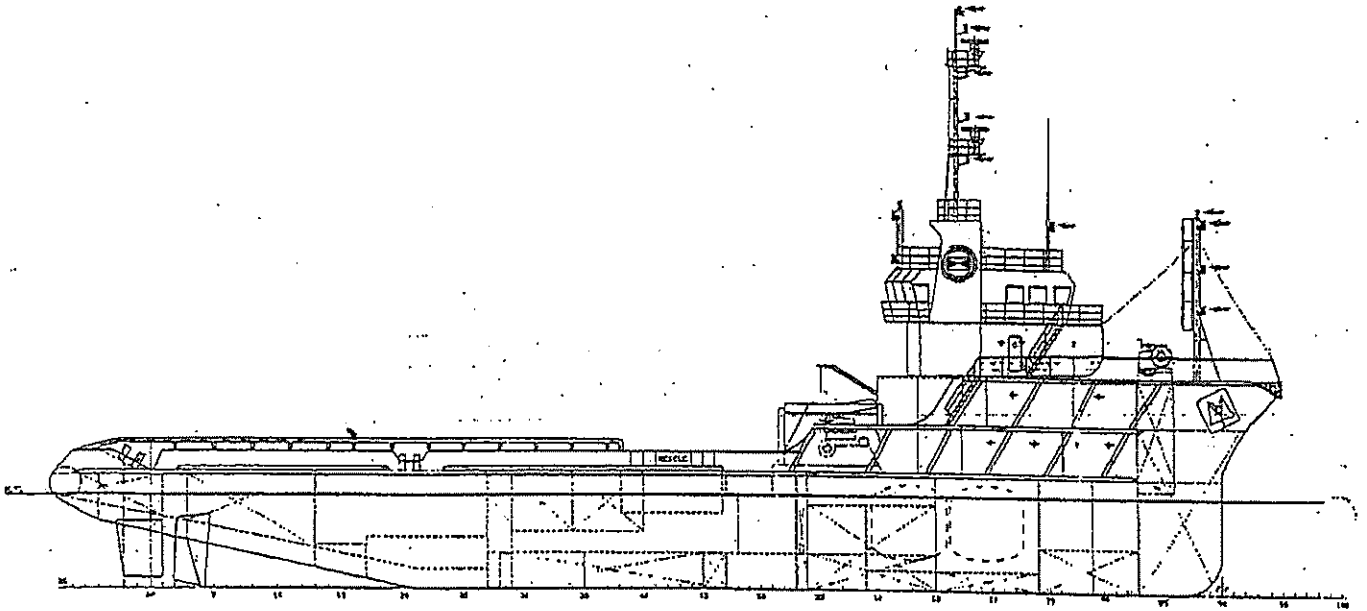
Crew Accommodation	(9 x 1-berth, 2 x 2-berth) 13
Passengers	(3 x 4-berth) 12
	Total 25

EXTERNAL FIRE FIGHTING

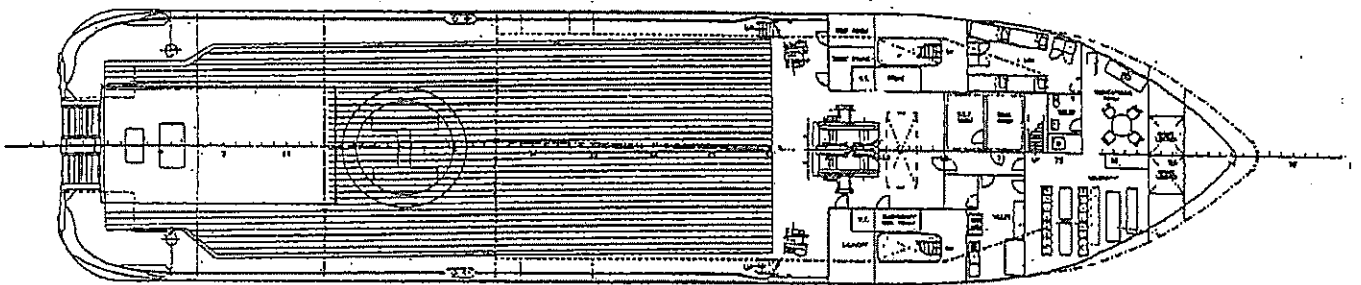
Capacity	Fifi 1 - 2400 m3 per hr
Monitor	2 x 1500 m3 per hr
Throw x Height	176 m x 58 m

This technical specification sheet is subject to change without notice. Whilst every effort has been made to ensure that accuracy of the information represented within this document, no guarantees of accuracy can be given.

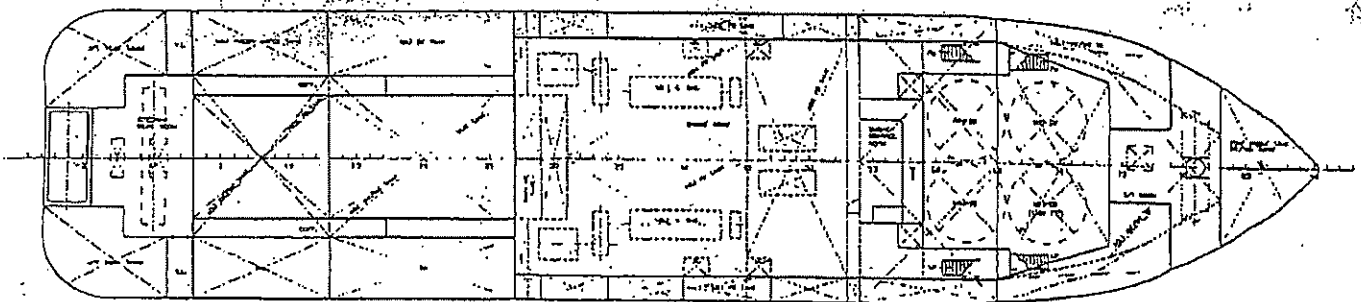
VOS Argosy



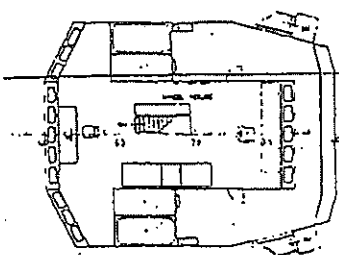
PROFILE



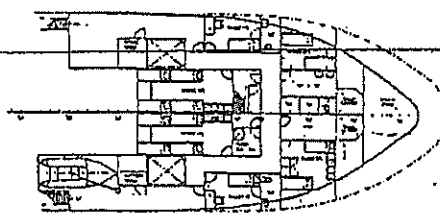
MAIN DECK



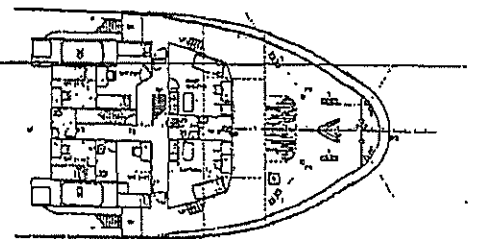
UNDER MAIN DECK



BRIDGE DECK



FORE CASTLE DECK



UPPER FORE CASTLE DECK