



GENERAL		COMMUNICATIONS EQUIPMENT	
Place of Build	Fujian South East Shipyard, China	HF radio	Furuno
Vessel Type	AHTS	VHF Radio	2 x fixed
Year Built	2010	Portable VHF Radio's	6 handhelds
Flag	Singapore	Satellite Communications (Voice and Fax)	Mini M
Call Sign	9V8665	E.P.I.R.B	McMurdo 406
Class	ABS FIFI 1 DPS 1	GMDSS Compliance	Area A3

PRINCIPLE DIMENSIONS		NAVIGATION EQUIPMENT	
Length Overall	59.25 metres	Radar No. 1	Furuno x-band (21" screen)
Beam	14.95 metres	Radar No. 2	Furuno x-band (15" screen)
Maximum Draft	4.95 metres	GPS	GP 150
Net Registered Tonnage	503	Echo Sounder	Furuno FE 702
Gross Registered Tonnage	1678	Navtex	NX 700
		Auto Pilot	Nautopilot NP 60
		Gyro Compass	Anchutz STD 22

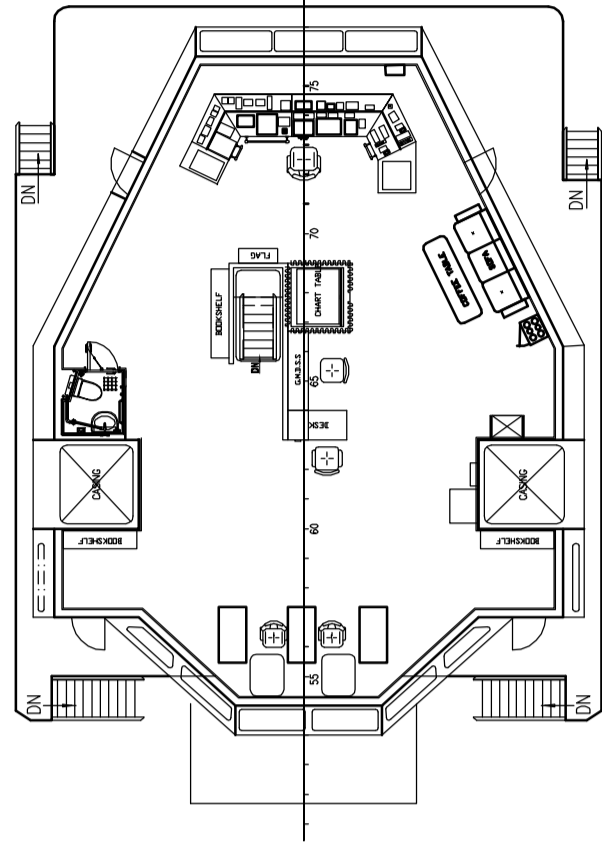
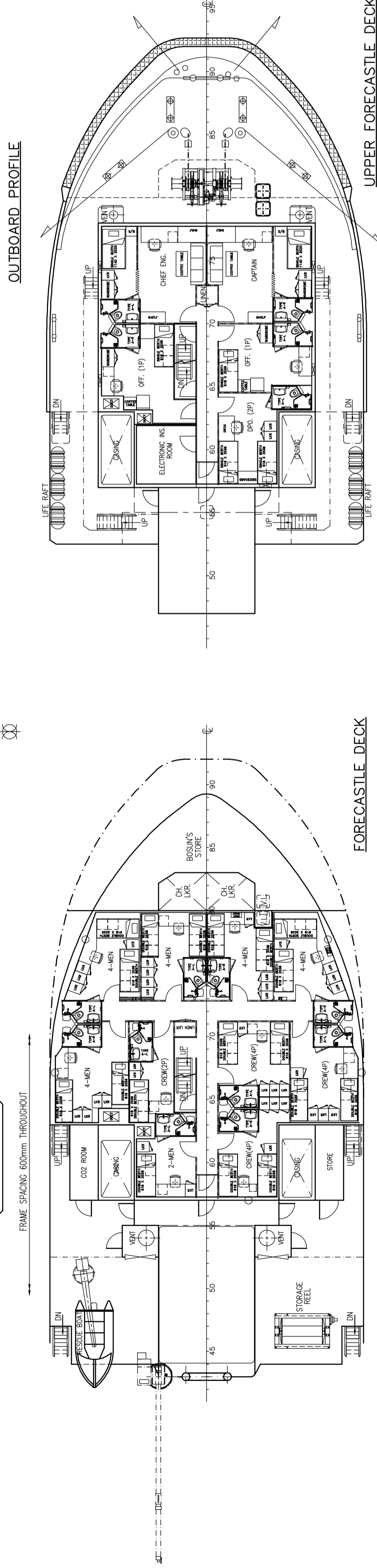
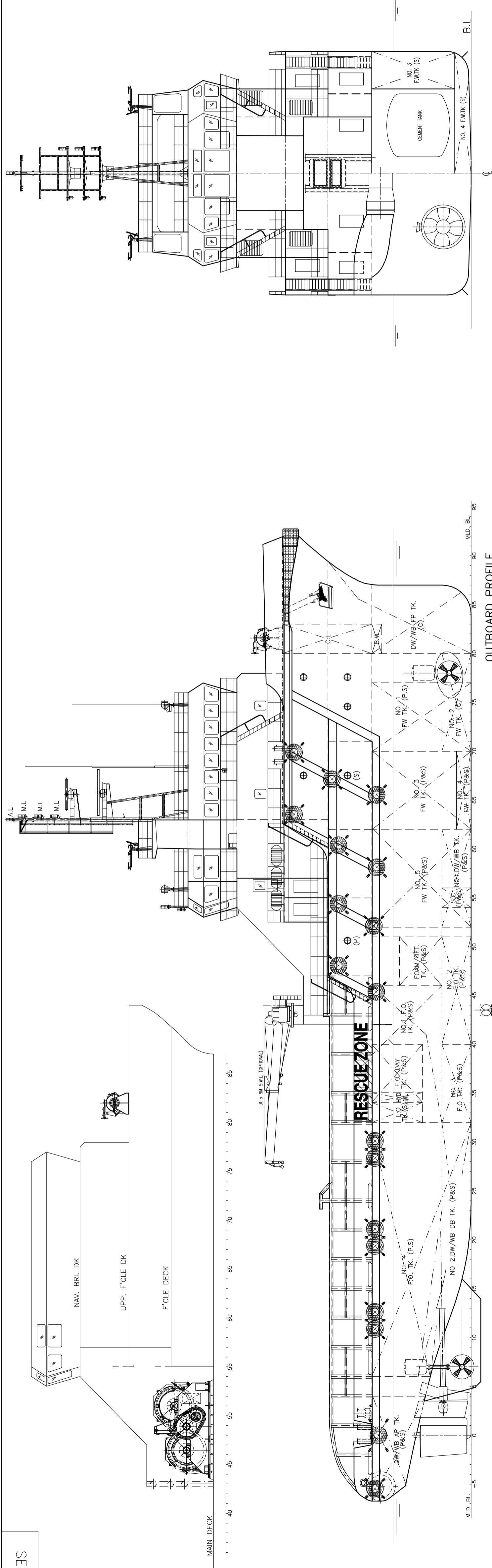
MACHINERY & PROPULSION		DECK MACHINERY	
Main Propulsion Number	2	Tugger Winch	2 x 10 tons
Main Propulsion Type	CAT 3516B Diesel	Capstan	2 x 5 tons
Total BHP	5150	Deck Crane	1 x 3 tonnes @ 9 m
Propellers	2 x CPP in fixed nozzles		
Bow Thruster	1 x electric motor, CPP		
Lateral Thrust	8 tons		
Stern Thruster	1 x electric motor, CPP		
Lateral Thrust	6 tons		
Auxiliary Generators	2 x 320 KW diesel driven		
Emergency Generators	1 x 52 KW CAT		
Rudders	Standard		

PERFORMANCES		TOWING & ANCHOR HANDLING	
Fuel Consumption at Max Speed	18 m3 per day @ 13 knots	Bollard Pull	65 tons
Fuel Consumption at Service Speed	10 m3 per day @ 10 knots	Winch	Plimssoll Waterfall Type
Towing	20 m3 per day	Line Pull	150 tons
Standby	1 m3 per day	Brake Capacity	200 tons
Fuel Type	ISO 8217: 2005 DMA or later revisions	Anchor Handling Wire Capacity	150 m x 52 mm
		Tow Drum Capacity	1000 m x 52 mm
		Spare Tow Wire Capacity	1000 m x 52 mm
		Stern Roller	4.0 m x 1.5 m - SWL 180 tonnes
		Tow Pins	2 x Karmoy pins
		Shark Jaws	1 x Karmfork

CARGO CAPABILITIES		LIFE SAVING APPARATUS	
Fresh Water	360 m3 @ 100m3 per hr at 75m head	Liferafts	Total 6, capacity 150 men
Drill Water	400 m3 @ 100m3 per hr at 75m head	Rescue Boat	25 HP OBM, capacity 6 men
Fuel Capacity (100%)	535 m3 @ 150m3 per hr at 75m head		
Liquid Mud	365 m3 @ 70m3 per hr		
Dry Bulk	4 X 1650 cu ft each, total 6,600 cu ft		
Dead Weight	1360 tons		
Clear Deck Area	25m x 12.5m = 350 Square Metres		
Deck Cargo	500 tons		

ACCOMMODATION		EXTERNAL FIRE FIGHTING	
Crew	12	Capacity	FIFI 1 - 2 x 1200 cu m per hr
Passengers	28	Monitor	2
	(1 x 2 berth) & (7 x 4 berth)	Throw x Height	120 m x 50 m
	<b>Total 40</b>		

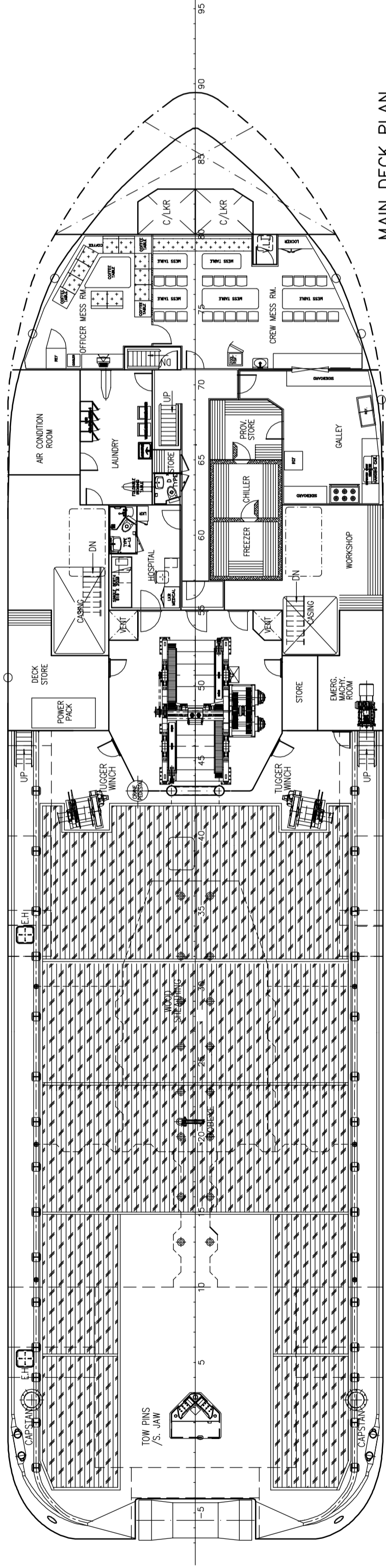
This technical specification sheet is subject to change without notice. Whilst every effort has been made to ensure that accuracy of the information represented within this document, no guarantees of accuracy can be given.



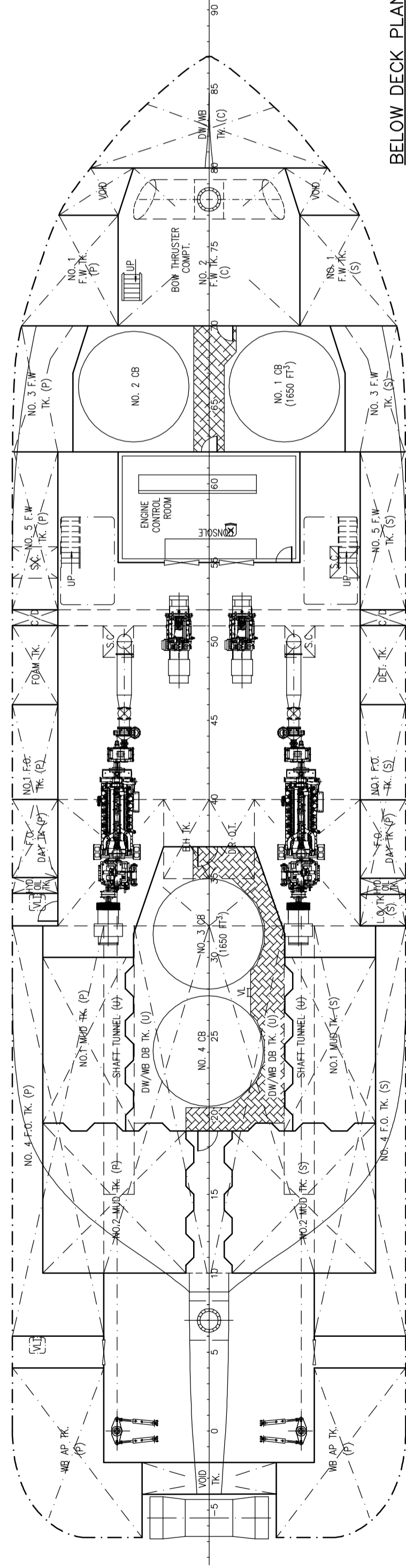
BRIDGE DECK PLAN

PRINCIPAL DIMENSIONS

- LENGTH (O.A.) 59,250 M
  - LENGTH (W.L.) 56,000 M
  - LENGTH (B.P.) 52,200 M
  - BEAM (M.L.D.) 14,950 M
  - DEPTH (M.L.D.) 6,100 M
  - DESIGN (M.L.D.) 4,950 M
  - FUEL OIL 540 M<sup>3</sup>
  - FRESH WATER 300 M<sup>3</sup>
  - DRILL WATER / W.B. 400 M<sup>3</sup>
  - MUD 385 M<sup>3</sup>
  - 320 M<sup>2</sup>
  - DECK CARGO (DECK LOADING = 7.5T/M<sup>2</sup>) 187 M<sup>3</sup>
  - DRY BULK TANKS (4x1650 FT<sup>3</sup>) 2 X 2575 BHP
  - MAIN PROPULSION ENGINE 13.0 KNOTS
  - SPEED (TRIALS) 62 TONS
  - BOLLARD PULL 42 MEN
  - COMPLEMENT
- CLASS & NOTATION : ABS A1(E) TOWING VESSEL, FIRE FIGHTING VESSEL CLASS 1, OFFSHORE SUPPORT VESSEL + AMS +DPS-1



MAIN DECK PLAN



BELOW DECK PLAN

生产设计	SE634-100-01
PRODUCTION DESIGN	SE634-100-01
船舶设计	DNS9M-74/75
DESIGN	DNS9M-74/75
设计人	ABS
DESIGNER	ABS
审核人	
CHECKER	
日期	
DATE	
比例	1:150
SCALE	1:150
图号	第 1 页 共 1 页
DWG. NO.	PAGE 1 OF 1
设计单位	福建省东南造船厂
DESIGN UNIT	FUJIAN SOUTHEAST SHIPYARD