



### GENERAL

Flag	Dutch
Port of Registry	Breskens
Built / yard nr	1982 / 178
Construction yard	Ulstein Hatlo/ Ulsteinvik
Official nr	1256
IMO Nr	8107177
Class	DNV 1AA SF EO Dybnapos-AUTR

### PRINCIPLE DIMENSIONS

Length Overall	78.30 m
Length between perpendiculars	72.70 m
Beam moulded	17.50 m
Depth	7.30 m
Maximum draft	4.98 m
Summer freeboard	3.60 m
Keel to topmast	27.20 m
GT / NT	2770 / 831
Deadweight	2775 t

### MACHINERY & PROPULSION

Main Engine	2 x Bergen V12
Main Engine Output	2 x 3060 @820 rpm
Generator eng type	3 x Cummins
	2 x Shaft generators
	1 x deck equipment gen.
Generator Output	3 x 305 Kva
Bollard pull	50 t
Bollard pull side	21 t side thrust (4 thrusters - 2250 KW
Propulsion	2 x Ulstein C/P Propellers
Stern thruster	2 x Ulstein 590 KW
Bow thruster	2 x Ulstein 590 KW

### PERFORMANCES

Throttle	Speed / consumed mt / day
100%	14 knots / ca 17
70%	10,5 knots / ca 11,5
50%	9 knots / ca 10
Port Idle	ca 0.5

Consumption in full DP mode , depending on environmental conditions 8 - 12 mt / d

### CAPABILITIES

MDO	964 mt
Freshwater	556 mt
Dry Bulk	6700 cuft in 5 tanks
Deck Area	41.6 m x 15 m
Deck Load	5 mt / m2

### ACCOMMODATION

Accommodation	Max capacity 57
Crew	22 crew
Charterer	28
Hospital	

### COMMUNICATIONS EQUIPMENT

Mobile phone	yes
SAT F	yes
SAT C	yes
K/U Band	yes
Internet access	yes
Email	yes

### RESCUE EQUIPMENT

Rescue craft	FRC
Davit	yes

### NAVIGATION EQUIPMENT

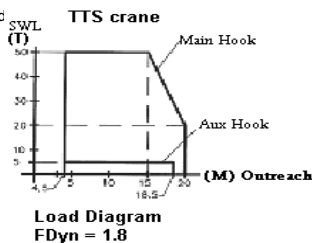
Navtex 1	yes
VHF Direction Finder	yes
Gyro Compass 3	yes
Automatic Pilot	yes
Joystick Manoeuvring System	yes

### DYNAMIC POSITIONING

System	SIMRAD SDP-21
HPR	SIMRAD HIPAP 350
MRU	2 x Seatex MRU-2
DGPS	2 x Sercel NR 203, multi differential
LTW Kongsberg	Bandak MK XV
DP Interface	available
Cy-scan	yes

### DECK EQUIPMENT

Deck crane SB	50 t @ 4,5 - 20 m knuckle boom type length of crane wire 500 m
Deck crane (SB forward)	5 t @ 7 m telescopic
Deck crane (BB amidships)( effer)	1,0 t @ 7m
A-frame (optional)	SWL 20 t
Winch (optional)	50 t : 1200 m wire 36 mm
Electrical connections	440/220 V - 60 Hz



This technical specification sheet is subject to change without notice. Whilst every effort has been made to ensure the accuracy of the information presented, no guarantees of accuracy can be given.