

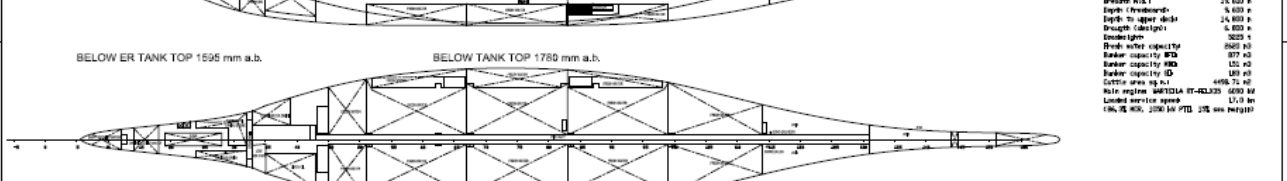
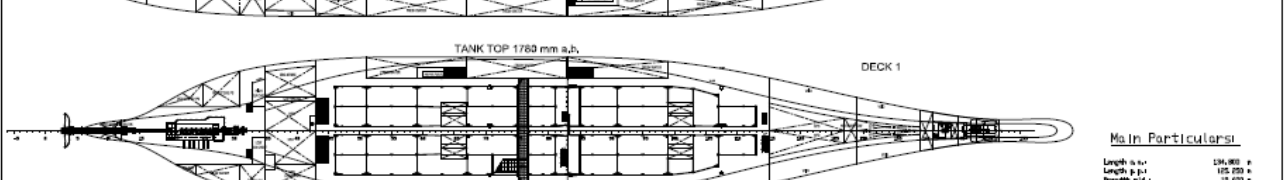
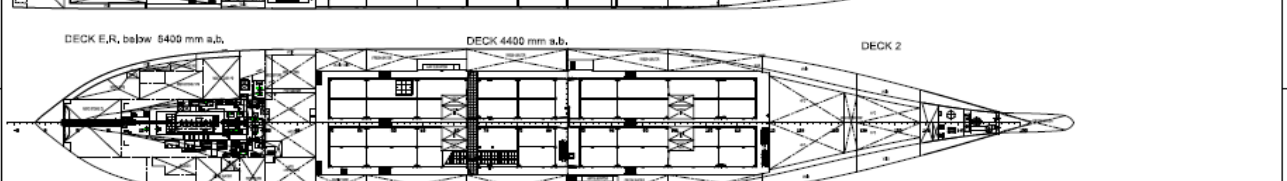
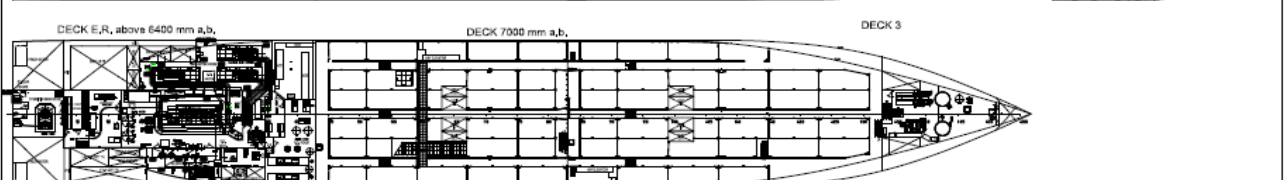
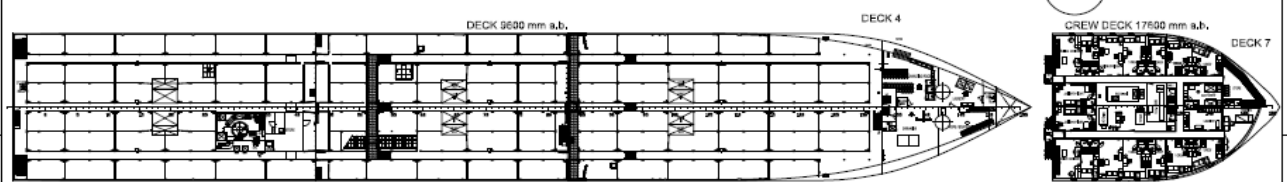
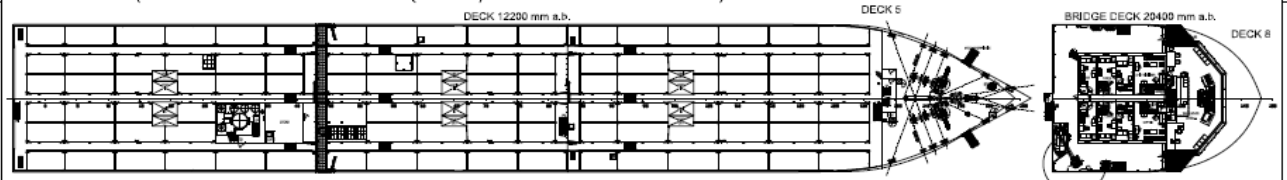
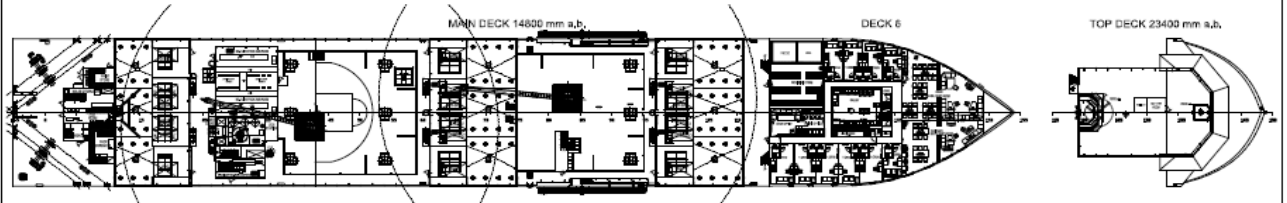
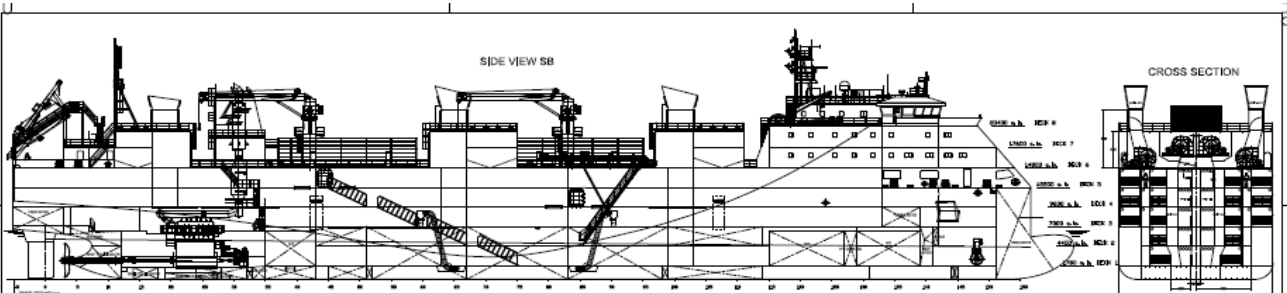


Livestock Express * E chartering@livestock-express.com * W www.livestock-express.com

Livestock Vessel Galloway Express

Flag : Singapore Port of Registry : Singapore Built : 2013 IMO N° : 9621194 Class : Rina Builder : China, Cosco Guangdong Class notation : C ⓧ livestock carrier; unrestricted navigation ⓧ AUT-UMS; COMF-NOISE-B; COMF-VIB-B; GREEN STAR 3 DESIGN; INWATERSURVEY; MON-SHAFT	<p style="text-align: center;">Dimensions</p> LOA : 134.80 m Length between pp : 125.25 m Beam moulded : 19.60 m Depth : 14.80 m Summer draft : 6.80 m
<p style="text-align: center;">Machinery</p> Main Engine : 6,090 kW Wartsila W7X35 Shaft generator : 1,050 kW Aux Engines : 3 x 1,100 kW 2nd source of power : 465 kW Bow Thruster : 750 kW	<p style="text-align: center;">Tonnages</p> DWT : 5,224.86 T Scantling draft : 6.80 m Design draft : 5.80 m Gross Tonnage : 10,421 Net Tonnage : 3,126
<p style="text-align: center;">Remarks</p> Gear : 2 x 3 T deck cranes @ 24 m Air circulation: 90 air changes per hour (200 PAT)	<p style="text-align: center;">Speed</p> Service speed: abt 16.75 knots (shaft generator engaged)
<p style="text-align: center;">Capacities / Distribution</p>	
Total Gross Pen area: 4,499 m ² Total Gross Sheep Pen area (only deck 5): 891 m ² Number of decks: 5 Deck space fodder: 495 m ² Fodder (silo): 1,200 m ³ Fresh water: 2,646 m ³ Fresh water production: 2 x 100 m ³ per day	HFO 954 m ³ MGO 196 m ³ MDO 168 m ³

Livestock Express * E chartering@livestock-express.com * W www.livestock-express.com



Main Particulars:

Length o.a.	134,900 #
Length p.p.l	135,050 #
Beam m.a.s.	24,600 #
Depth (moulded)	6,800 #
Depth to upper deck	24,600 #
Depth (air draft)	6,800 #
Deadweight	8500 #
Grain capacity	877 #
Ballast capacity	152 #
Water capacity	189 #
Water capacity (D)	877 #
Water capacity (W)	152 #
Water capacity (B)	189 #
Water capacity (T)	877 #
Water capacity (S)	152 #
Water capacity (C)	189 #
Water capacity (A)	877 #
Water capacity (V)	152 #
Water capacity (H)	189 #
Water capacity (F)	877 #
Water capacity (G)	152 #
Water capacity (J)	189 #
Water capacity (K)	877 #
Water capacity (L)	152 #
Water capacity (M)	189 #
Water capacity (N)	877 #
Water capacity (P)	152 #
Water capacity (Q)	189 #
Water capacity (R)	877 #
Water capacity (S)	152 #
Water capacity (T)	189 #
Water capacity (U)	877 #
Water capacity (V)	152 #
Water capacity (W)	189 #
Water capacity (X)	877 #
Water capacity (Y)	152 #
Water capacity (Z)	189 #

Scale	1:100	Sheet	1/1
Author	GENERAL ARRANGEMENT PLAN	Scale	1:100
Editor	GENERAL ARRANGEMENT PLAN	Scale	1:100
Checker	GENERAL ARRANGEMENT PLAN	Scale	1:100
Reviewer	GENERAL ARRANGEMENT PLAN	Scale	1:100
Approver	GENERAL ARRANGEMENT PLAN	Scale	1:100
Issue	GENERAL ARRANGEMENT PLAN	Scale	1:100
Rev	GENERAL ARRANGEMENT PLAN	Scale	1:100